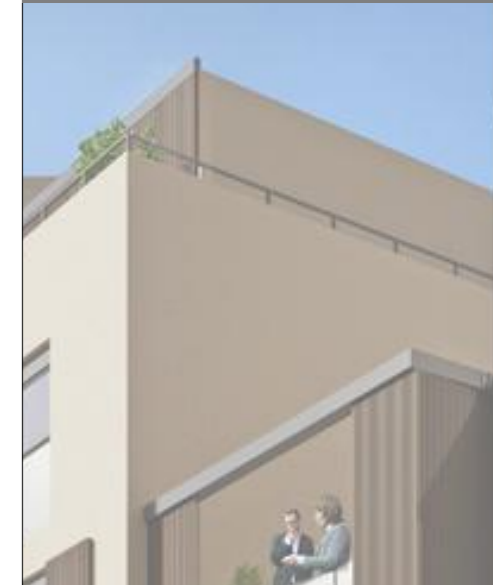


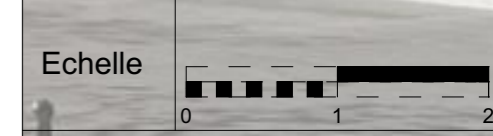
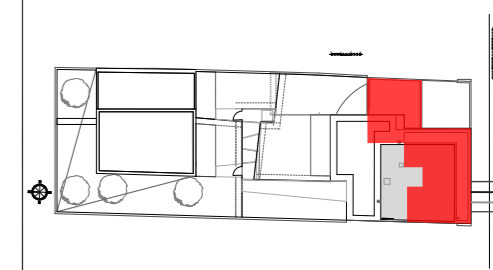
A32.4

R+3



| | |
|--------------------|---|
| Séjour/Cuisine | 32,51 m ² |
| Chambre 1 | 12,62 m ² dont placard 0,98 m ² |
| Chambre 2 | 9,98 m ² dont placard 0,71 m ² |
| Chambre 3 | 10,00 m ² dont placard 0,91 m ² |
| Salle de bain / WC | 4,54 m ² |
| Buanderie | 0,94 m ² |
| Dégagement | 7,79 m ² |

| | |
|---------------------------------|--|
| SURFACE TOTALE HABITABLE | 78,38 m² dont placards 3,26 m ² |
| TERRASSE | 24,04 m ² |



25/07/2017

